



i DESCRIPTION



Stainless steel net cartridges are so-called “surface cartridges” with non deforming structure.

They are well indicated for difficult applications such as filtering of corrosive liquids or where high temperatures apply.

They are available in the following versions:

- Series AC; non-pleated stainless steel with end caps in polypropylene
- Series AC-HT; non-pleated stainless steel with end caps in stainless steel.

Because of its structure, stainless steel has no particle migration therefore especially suitable for those applications where drinkable water is being processed.

The Stainless steel net has a special structure called REPS that thanks to its characteristics makes it very strong and of high filtering efficiency. All end caps are electrically welded and no resin or glues are used.

All stainless steel cartridges are washable and therefore can be used time and time again.

The washable net cartridge is ideal for:

- Water Treatment
- Oils
- General Industries

Paint:

Fuel:

Resins:

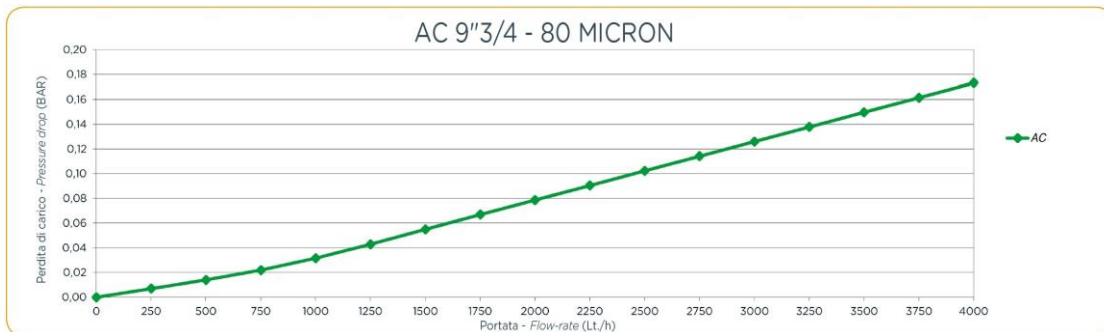
Lubricant:

Polymer:

Bulk Chemicals/petrochemicals:

g TECHNICAL FEATURES

Characteristic	AC	AC-HT
Raw material	SS AISI 304	SS AISI 304
Core	SS AISI 304	SS AISI 304
Outer cage	-	-
End caps	DOE-PP	DOE-INOX
O-Ring/Gasket	SEBS	SEBS
Length (a) inches	5"-9"3/4	9"3/4-20"
Inner diameter (b)mm	27	26
Inner diameter (d)mm	27	26-37
Outer diameter (c)mm	68	68
Micron rating	80	80
Efficiency	75%	75%
Max working pressure	8 BAR	9 BAR
Max differential pressure	8 BAR	9 BAR
Max working temperature	50°C	50°C



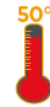
Filter Cartridges

RL-RLA Line

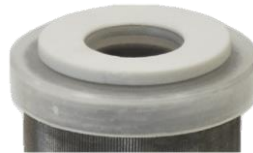


NON-PLEATED STAINLESS STEEL CARTRIDGES series AC with end caps in PP

Code	Length inches	Micron	Flow Rate l/hr	Box Qty	Box Wt	Box Dimensions axbxc mm	Price B
A4050110	5	80	1200	30	4.92	410X290X250	£24.95
A4050130	9½	80	2500	30	3.90	410X290X250	£31.23
A4050140	20	80	4800	15	7.80	410X590X250	£62.44



A6010210



NON-PLEATED STAINLESS STEEL CARTRIDGES series AC-HT with end caps in stainless steel for 3/4" - 1" inlets/outlets and for FO3 1"1/4

Code	Length inches	Micron	Flow Rate l/hr	Box Qty	Box Wt	Box Dimensions axbxc mm	Price B
A4050030	9½	80	2500	15	3.95	410X290X250	£41.27
A4050040	20	80	5000	15	6.84	410X290X250	£82.53



A6010210



NON-PLEATED STAINLESS STEEL CARTRIDGES series AC-HT with end caps in stainless steel for 1"1/4-1"1/2 - 2" inlets/outlets

Code	Length inches	Micron	Flow Rate l/hr	Box Qty	Box Wt	Box Dimensions axbxc mm	Price B
A4050080	9½	80	3200	15	3.95	410X290X250	£43.85
A4050090	20	80	6400	15	6.84	410X540X250	£87.60



A6010860

